

<sup>9.050</sup>  
**Budget**



## **SPARE PART LIST**

Budget 2

Model 9.050



**MEYRA<sup>®</sup>**  
**ORTOPEDIA**  
We move people.



<b>Budget 2 / a</b> <b>Table of contents</b>
---

<b>Introduction</b>	4
<b>Order specimen</b>	5
<b>01 Frame</b>	
-Frame	6
<b>05 Brake</b>	
-Pressure Brake	7
-Drum Brakes	7
<b>06 Chassis</b>	
-Steering wheel	8
-Driving wheel	8
<b>07 Back support</b>	
-Back straps	9
<b>08 Seat</b>	
-Seat straps	10
<b>09 Arm support</b>	
-Code 70; Arm support long, swivell-away, removable	11
-Code 107; Arm support long, swivell-away, height adj., removable	11
-Code 577; Fold-away arm support with plastic insert, steel	12
<b>10 Leg supports</b>	
-Code 92; Removable height adj. leg support, swivell-away	13
-Code 93; Removable leg supports, swivell-away	14
-Code 805; Foot plates plastic, divided	14
<b>12 Cross braces</b>	
-Cross braces	15
<b>20 Seat cushion</b>	
-Seat cushion	16
<b>Accessories</b>	
-Accessories	17

Exact specifications are required for your spare parts' orders. Only then we can guarantee that you will receive the correct spare part. All MEYRA-ORTOPEDIA -wheelchairs are manufactured according MEYRA-ORTOPEDIA -component group system.

## Assembly group outline

Component unit 01: Frame	Component unit 12: Crossbrace
Component unit 03: Steering	Component unit 15: Electrical system
Component unit 04: Drive	Component unit 16: Working table
Component unit 05: Pressure Brake	Component unit 17: Support wheels
Component unit 06: Chassis	Component unit 20: Seat cushion
Component unit 07: Backrest	Component unit 24: Other Codes
Component unit 08: Seat	Component unit 26: Revetment
Component unit 09: Armrest	Component unit 98: Accessories and small parts
Component unit 10: Leg support	Component unit 99: Circuit diagrams

The index lists different versions of an assembly group, therefore you will find the spare part you are searching for quickly and precisely.

### Note:

The assembly group outline also includes assemblies that do not apply to your model.

## Liability/ guarantee for foreign products

Do not use any foreign products as spare parts or accessories for MEYRA-ORTOPEDIA -Wheelchairs. Foreign products may affect the operational reliability of the wheelchair, even if the foreign products have not been tested by TÜV or another official authority (General Type Approval). The scope of testing may not always be comprehensive enough. **MEYRA-ORTOPEDIA does not accept any liability or guarantee for foreign products used as spare parts or accessories as well as for damages and accidents caused by exchange or installation of such parts.**

## Safety instructions for the use of spare parts

- When exchanging parts only use components corresponding to the wheelchair model and Code number.
- Please check after receipt if the spare part received is the same you ordered!
- Only authorized dealers or specialized workshops are allowed to carry out repairs on the wheelchair.
- Please take a test drive after repair of the wheelchair. Pay attention to unusual noises and check:
  - Braking ability
  - Steering ability
  - the straight running.

## Abbreviations used

In the bills of material you will find following abbreviations:

AT means exchange components

The parts (articles or standard parts) marked with a letter can be reused after inspection!

## Special features

Position numbers marked with a letter refer to parts not represented (e.g. for the opposite side).

<b>Budget 2 / a</b> <b>Order specimen</b>
--

## Order specimen

To establish your order examples please proceed as follows.

- 1. Type/Model**  
Please take the type number from the instruction manual, the delivery note or the type plate.
- 2. Manufacturing year and vehicle ID no.**  
Read off the year of construction and the vehicle identification number from the type plate, e.g.:  
**Year of construction: 97/12**  
**Vehicle ID No. (Fz-I-Nr.): 5678901**
- 3. Component unit**  
Allocate the defective part to an assembly group (see assembly group outline).
- 4. Code-No.:**  
Compare the code numbers of delivery note with the Code list of the corresponding assembly group. Code-No.: 626 backrest height 30cm
- 5. Look up representation of the assembly group chosen with corresponding Code No.**  
The page where you can find the required representation and bills of material is indicated in the table of contents after the code number.
- 6. Article-No:**  
A position number is indicated on the spare part that is to be ordered enabling you to read off the corresponding article number from the bill of material.
- 7. Determine the quantity**  
Determine number of component units to be replaced.  
**Remark:**  
The number of pieces indicated in the bills of material correspond to the number of component units used in the assembly group (left and right wheelchair side).
- 8. Determine the description**  
Read off the corresponding designation from the bill of materials.
- 9. Determine the colour**  
Please take the colour code from the delivery note.
- 10. Spare parts order:**  
For a correct order please indicate all data.

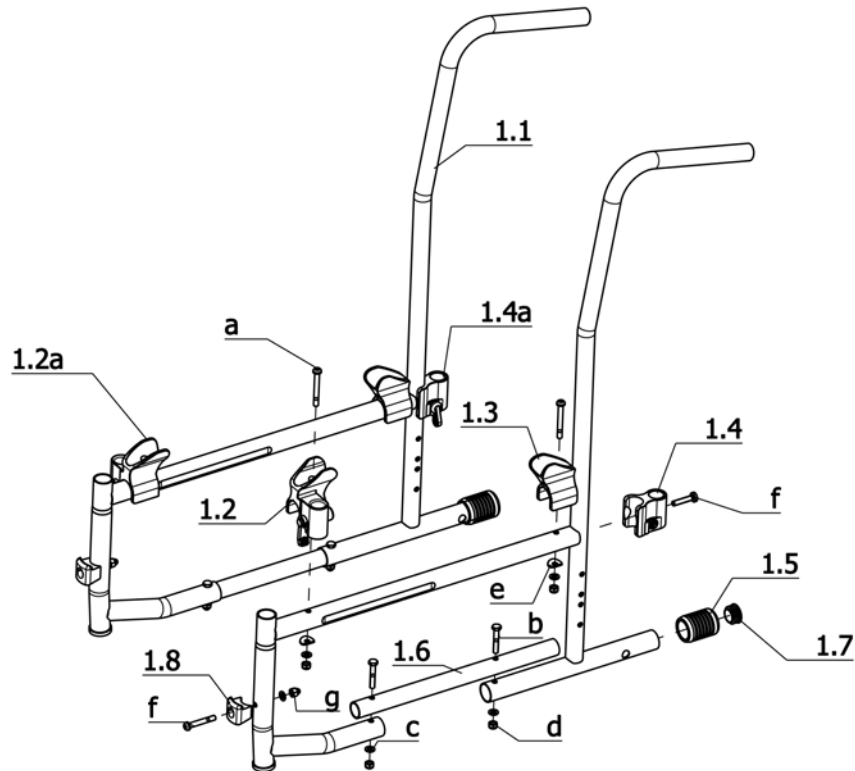
**Watch for the correct specifications on your order; Only then we can guarantee that you will receive the correct spare part.**

### Attention!

Subsequent changes to the wheelchair as well as arrangements with customers relating to the assembly group to be repaired have to be stated in your order.

### Important information!

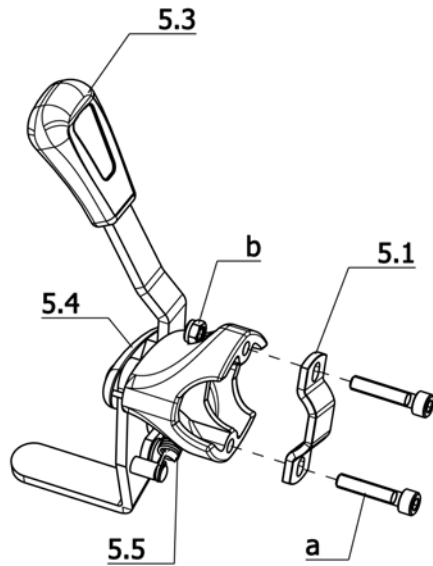
If any modifications have been made to the wheelchair, the specialized dealer is required to enclose the appropriate code no. as well as the date of the modifications, along with the operating instructions for the wheelchair. This ensures that no incorrect details will be given for future orders of spare parts. **Original- MEYRA-ORTOPEDIA - spare parts!**



## Sub Unit: Frame

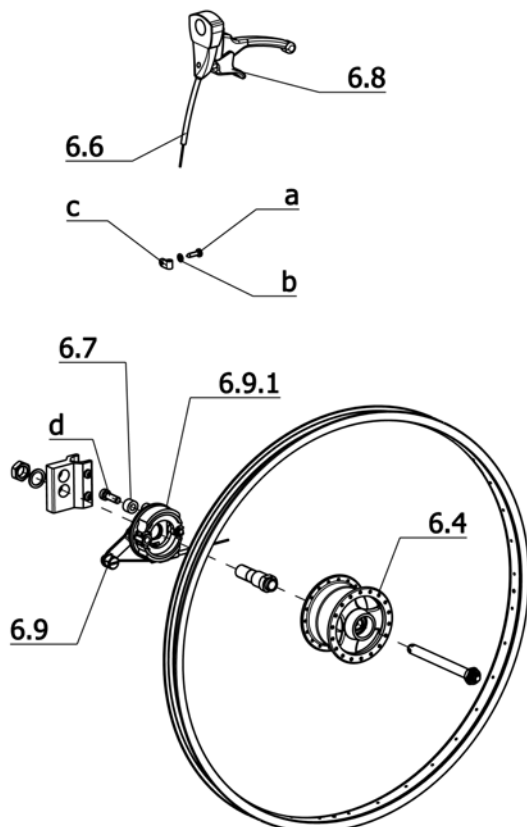
Item	Article-No:	Pc	Description
1.1	1 059 437	2	Side frame
1.2	1 039 441	1	Locking device guide, left
1.2a	1 039 443	1	Locking device guide, right
1.3	205 213 106	2	Rear seat bearing
1.4	1 058 834	1	Bearing block left asmb (rear)
1.4a	1 058 835	1	Bearing block right asmb (rear)
1.5	1 058 832	2	Pedal cap perforated L=45mm DI=24mm DO=34mm
1.6	1 061 786	2	Connector tube f side frame
1.7	8 012 351	2	LAMELLA PLUG, BLACK SFL 25 FOR TUBE 25/20-22
1.8	205 214 306	2	Locking bolt mount
a	205 598 300	4	Fillister head screw M6x50
b	207 308 000	4	Hexagon screw DIN 931 M6x35 8.8 A3T
c	207 330 200	8	Washer, DIN 125-B6, 4 St. A3T
d	207 320 100	8	Locknut, DIN 980/8, M6, A3T
e	1 044 522	4	Washer
f	207 602 700	2	Tapping screw DIN 7516 M6x30
g	207 320 000	2	Locking cap nut DIN 986 M6-8 A3T
h	205 597 400	2	Fillister head screw M6x40 10.9 A3T
-	1 061 553	2	Handgrip for tube D=22 mm L=108 mm - one side open

**Budget 2 / a**  
**Component unit: Brake**



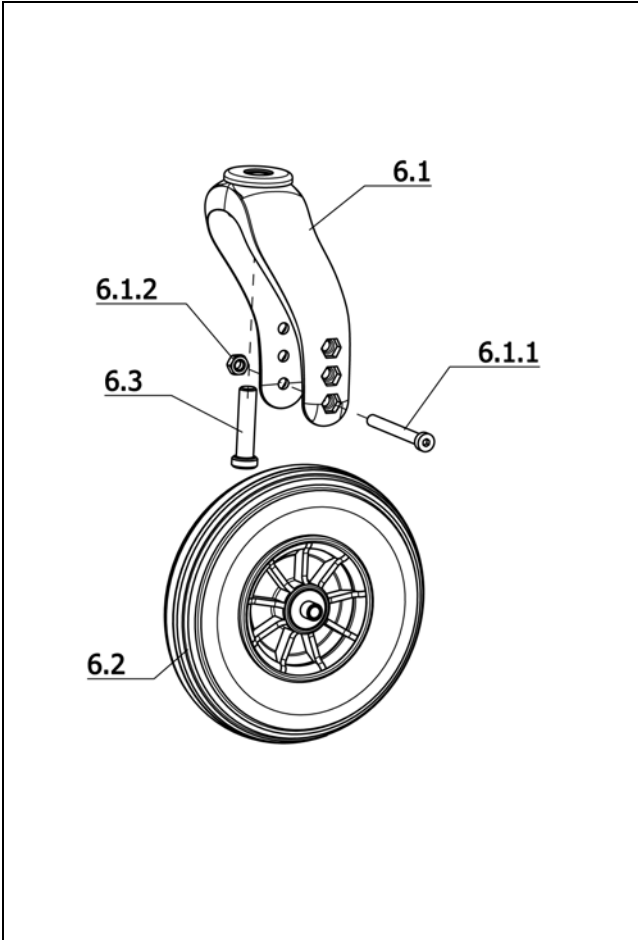
**Sub Unit: Pressure Brake**

Item	Article-No:	Pc	Description
5	1 056 788	1	BRAKE LEFT ASSY
5a	1 056 789	1	BRAKE RIGHT ASSY
5.1	1 068 130	2	Tube clamp for pressure brake Tightened for tube D=25 mm
5.3	1 052 924	2	Brake handle
5.4	1 056 786	1	BRAKE RIGHT
5.4a	1 056 785	1	BRAKE LEFT
5.5	206 300 000	2	Tension spring
a	207 120 800	4	Cheese head screw DIN 912 M 5x25-8.8
b	207 322 000	4	Locknut, DIN 980/8, M5



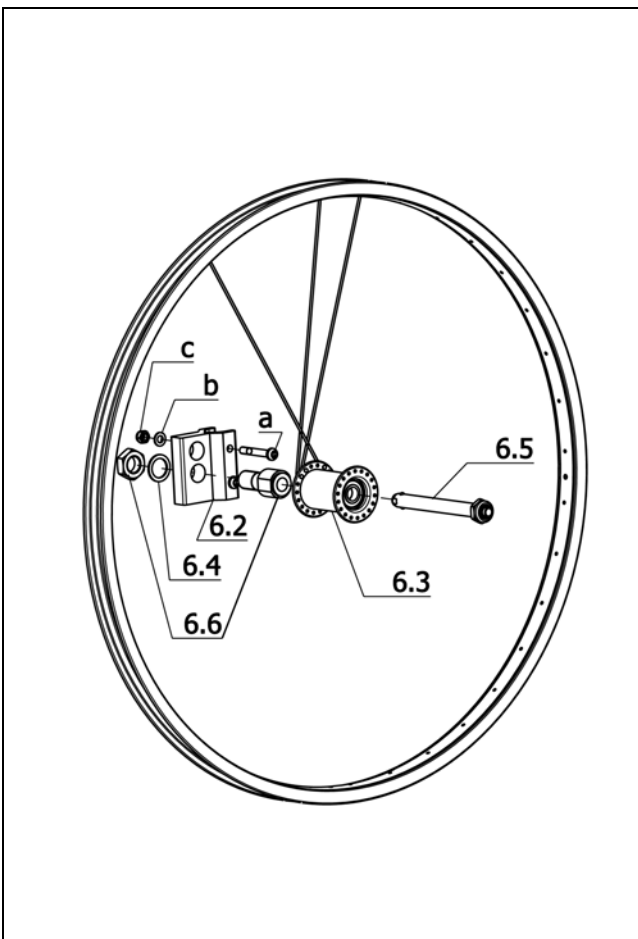
**Sub Unit: Drum Brakes**

Item	Article-No:	Pc	Description
6.4	0	1	refer to page driving wheels
6.6	206 662 100	2	Bowden cable, complete
6.7	1 062 218	2	Counter bracket (bushing) "D=16.1
6.8	8 401 828	2	Operating lever with detent pawl
6.9	5 006 542	1	Brake shield left asmb.
6.9a	5 006 541	1	Brake shield right asmb.
6.9.1	205 901 800	2	Brake blocks with tension spring
a	207 300 300	2	Fillister head tapping screw, DIN 7981-B4,8x19-St A3T,black
b	207 330 100	2	Washer DIN 125-B5,3 St A3T
c	205 017 300	2	Fastening clamp
d	207 122 400	2	Cheese head screw, M8x25 DIN6912 8.8 VC3



**Sub Unit: Steering wheel**

Item	Article-No:	Pc	Description
6.1	1 069 889	2	Steer.fork asmb w wheel axle
6.1.1	207 598 100	2	Cheese head screw M8x75 DIN798 4 - 8.8 A3T
6.1.2	207 320 400	2	Hexagon nut, M8 DIN 934
-	206 502 600	2	Deep groove ball bearing, DIN 625, 6002-2 Z
-	1 069 612	2	Cover cap (ste. fork bearing)
6.2	206 271 800	2	STEERING WHEEL 7 x 1 3/4" PU CODE 161 (175 X 36)
6.3	206 251 040	2	Cheese head screw, SO M12x50 VC3

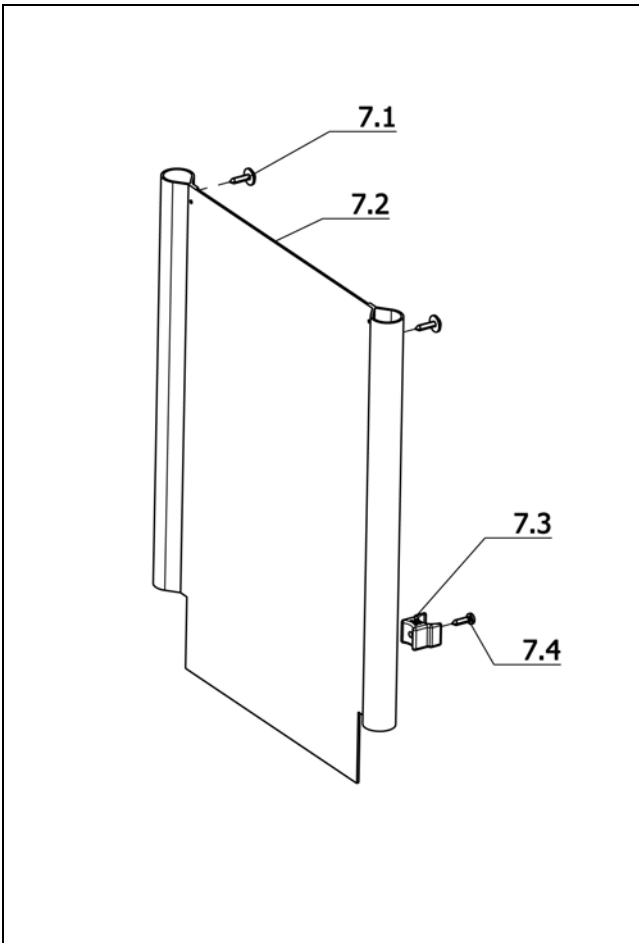


**Sub Unit: Driving wheel**

Item	Article-No:	Pc	Description
6.2	1 070 123	2	Wheel adapter
6.4	205 592 100	2	Locking washer, M 16
a	205 597 400	4	Filister head screw M6x40 10.9 A3T
b	207 330 200	4	Washer, DIN 125-B6,4 St. A3T
c	207 320 100	4	Locknut, DIN 980/8, M6, A3T
<b>Driving wheel for pressure brake</b>			
6.3	1 043 663	2	DRIVE WHEEL CPL 24X1 3/8" CODE 61-641-495-692-902
6.5	206 227 710	2	Floating axle with copunternut
6.6	206 227 720	2	Adapter with hexagon nut
<b>Driving wheel for drum brake</b>			
6.3	1 043 509	2	DRIVE WHEEL 24X1 3/8" DR.BR PU CODE:61-902-692-495
6.5	206 226 530	2	Floating axle
6.6	206 227 500	2	Adapter with hexagon nut
<b>Drive wheels - tyre</b>			
-	206 118 902	2	Tyres 24 x 1 3/8", grey
<b>Handrims</b>			
-	1 042 510	2	Steel handrims 24" chrome
-	5 006 549	8	Screw set for handrims (washer dep. on bracket thic.)
-	207 805 100	8	Square head nut DIN 557 M5

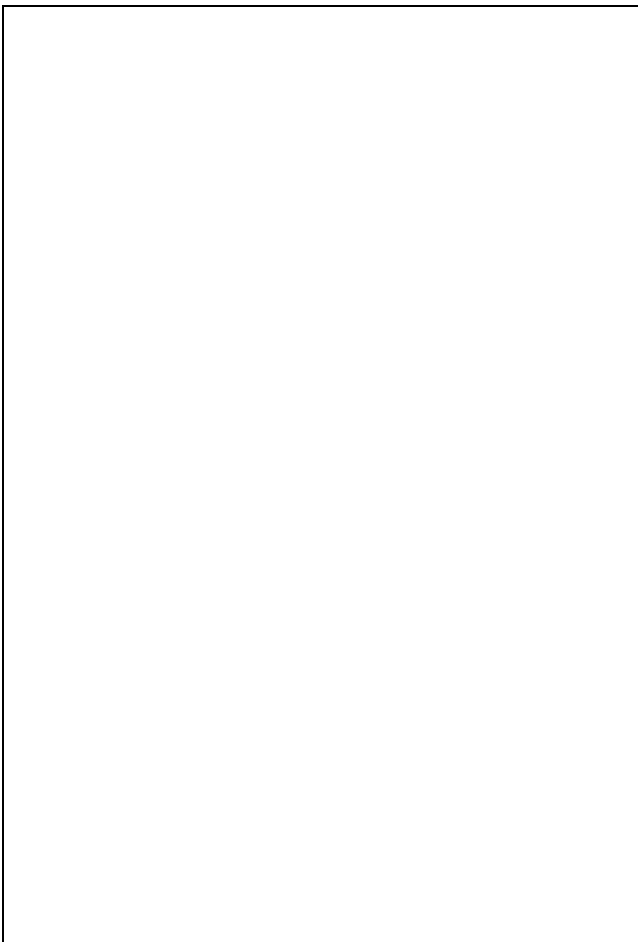
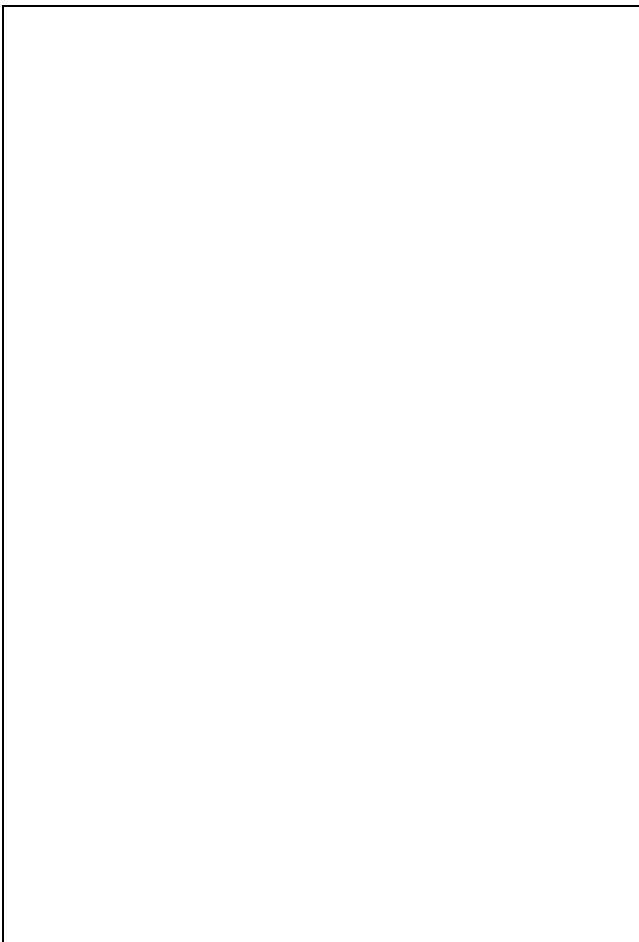


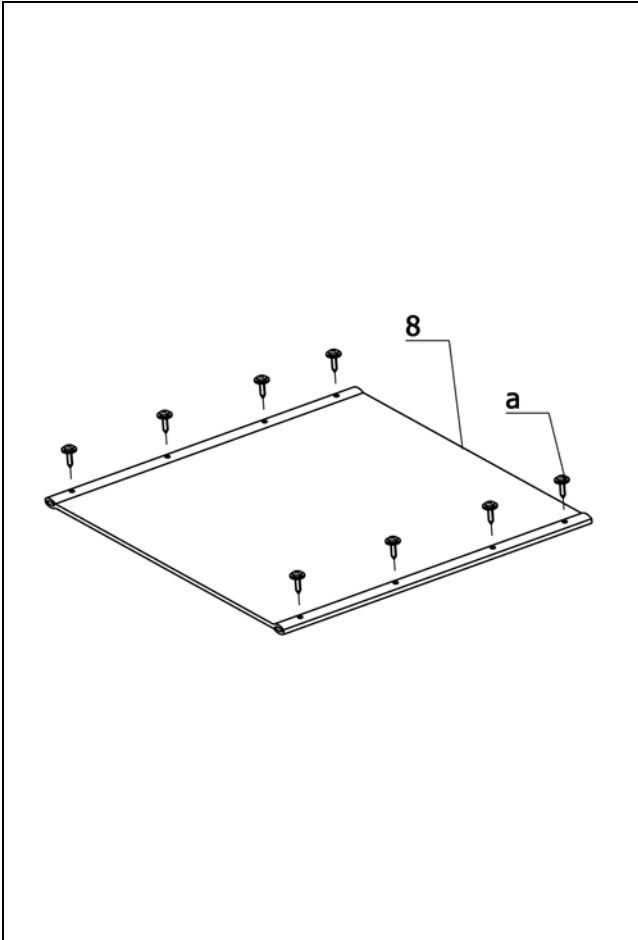
**Budget 2 / a**  
**Component unit: Back support**



**Sub Unit: Back straps**

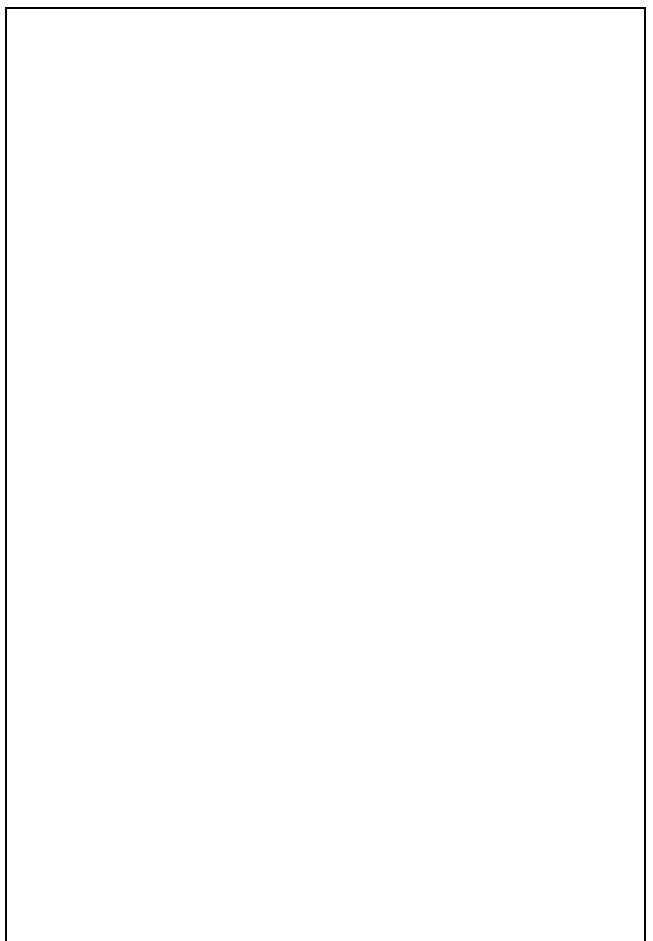
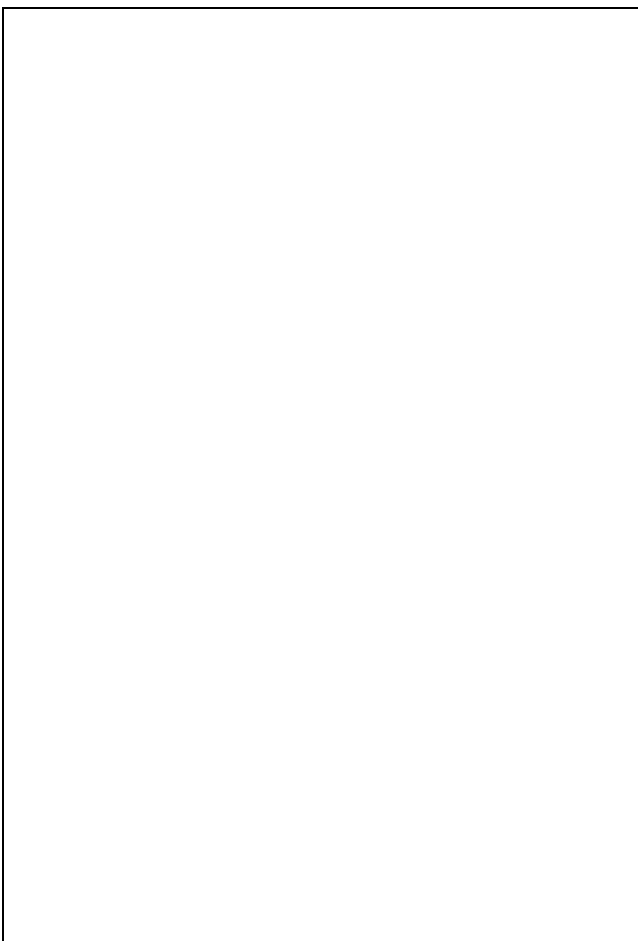
Item	Article-No:	Pc	Description
7.1	207 300 300	2	Filister head tapping screw, DIN 7981-B4,8x19-St A3T,black
7.3	205 016 906	2	Side element bracket, black RAL 9005
7.4	207 317 500	2	Filister head tapping screw, DIN 7981, B 4,8x22
<b>Code 38; Seat width 38cm</b>			
7	1 070 578	1	Back support Code 38-442-622
7.2	1 057 096	1	BACK SUPPORT CODE 38-442-621/622
<b>Code 40; Seat width 40cm</b>			
7	1 070 579	1	Back support Code 40-442-622
7.2	1 057 097	1	BACK SUPPORT CODE 40-442-621/622
<b>Code 43; Seat width 43cm</b>			
7	1 070 580	1	Back support Code 43-442-622
7.2	1 057 098	1	BACK SUPPORT CODE 43-442-621/622
<b>Code 46; Seat width 46cm</b>			
7	1 070 581	1	Back support Code 46-442-622
7.2	1 057 099	1	BACK SUPPORT CODE 46-442-621/622
<b>Code 48; Seat width 48cm</b>			
7	1 070 582	1	Back support Code 48-442-622
7.2	1 057 100	1	BACK SUPPORT CODE 48-442-621/622
<b>Code 345; Seat width 51cm</b>			
7	1 070 565	1	Back support Code 345-442-622
7.2	1 070 564	1	Back support belt Code 345-442-621



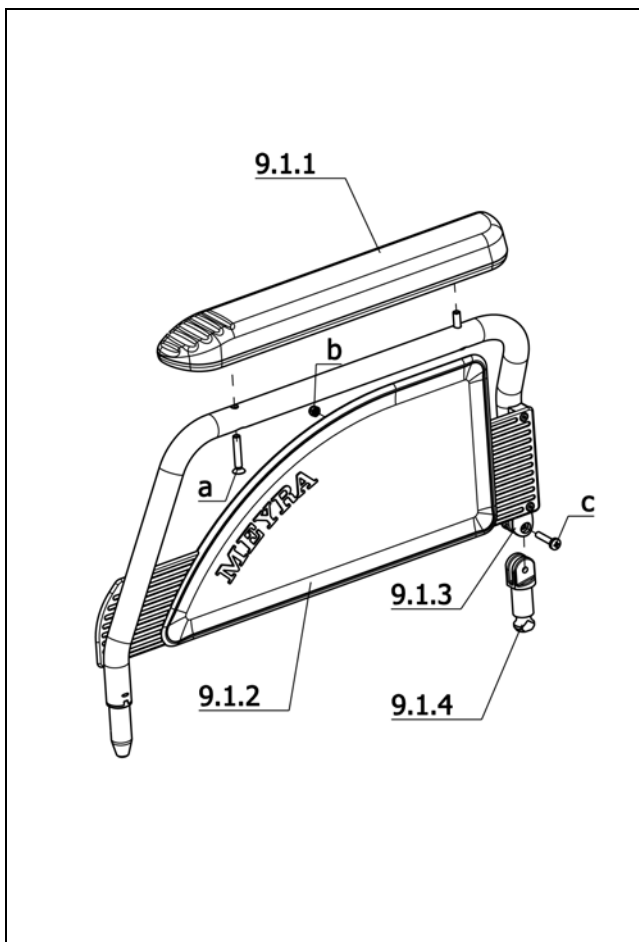


**Sub Unit: Seat straps**

Item	Article-No:	Pc	Description
a	207 317 500	8	Fillister head tapping screw, DIN 7981, B 4,8x22 <b>Code 38; Seat width 38cm</b>
8	1 068 157	1	Seat Code 35-38-788 4000 <b>Code 40; Seat width 40cm</b>
8	1 068 158	1	Seat Code 35-40-788 4001 <b>Code 43; Seat width 43cm</b>
8	1 068 159	1	Seat Code 35-43-788 4002 <b>Code 46; Seat width 46cm</b>
8	1 068 360	1	Seat Code 35-46-788 4003 <b>Code 48; Seat width 48cm</b>
8	1 068 361	1	Seat Code 35-48-788 4004 <b>Code 345; Seat width 51cm</b>
8	1 070 571	1	Seat Code 345-788

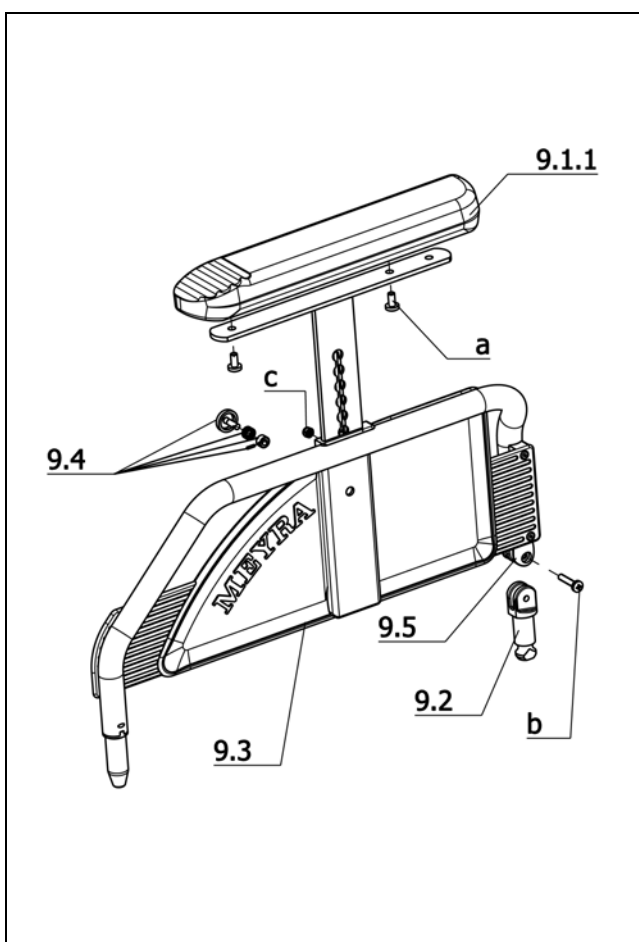


Budget 2 / a  
Component unit: Arm support



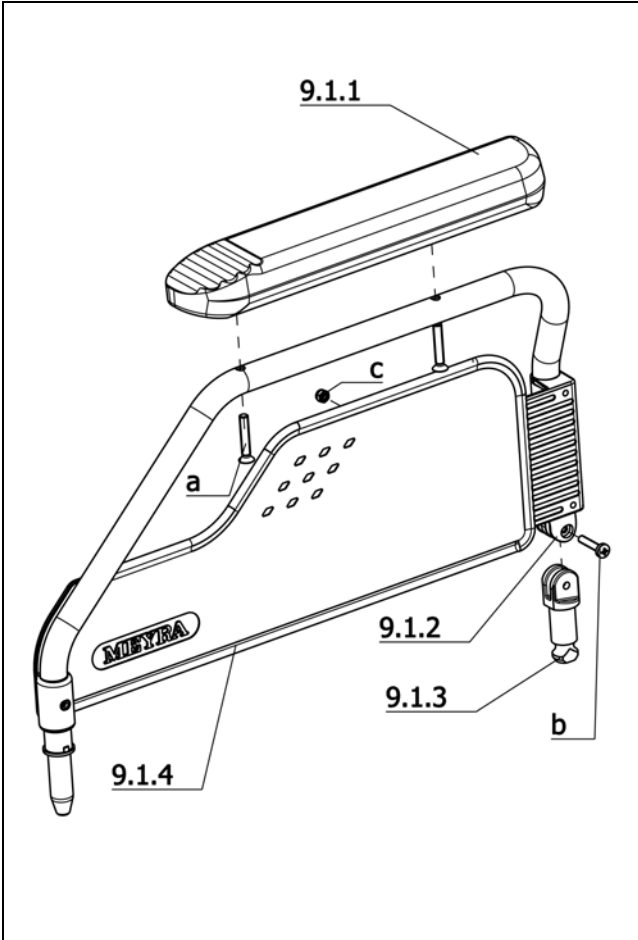
Sub Unit: Code 70; Arm support long, swivel-away, removable

Item	Article-No:	Pc	Description
9	1 048 988	1	Side elements long armrest Code 70
9.1	1 048 987	1	Side element left assembled code 70
9.1a	1 048 984	1	Side element right assembled code 70
9.1.1	1 036 473	1	Armrest, left Code 12
9.1.1a	1 036 479	1	Armrest, right Code 12
9.1.2	205 215 806	1	Side element, left, plastic part only
9.1.2a	205 215 906	1	Side element, light, plastic part only
9.1.3	205 221 806	2	Fork bearing for armrest U-frame
9.1.4	205 221 906	2	Fork mount, bottom
a	207 119 700	4	Oval head countersunk screw, M6x35 DIN966 4.8
b	207 322 000	2	Locknut, DIN 980/8, M5
c	207 341 300	2	Fillister head screw DIN7985 M5x25 4.8 A3T
-	205 525 700	4	POP blind rivet D/4 No.307 474
-	205 515 400	2	POP blind rivet, No. 307472
-	205 571 600	4	POP blind rivet D: 4x22,5



Sub Unit: Code 107; Arm support long, swivel-away, height adj., removable

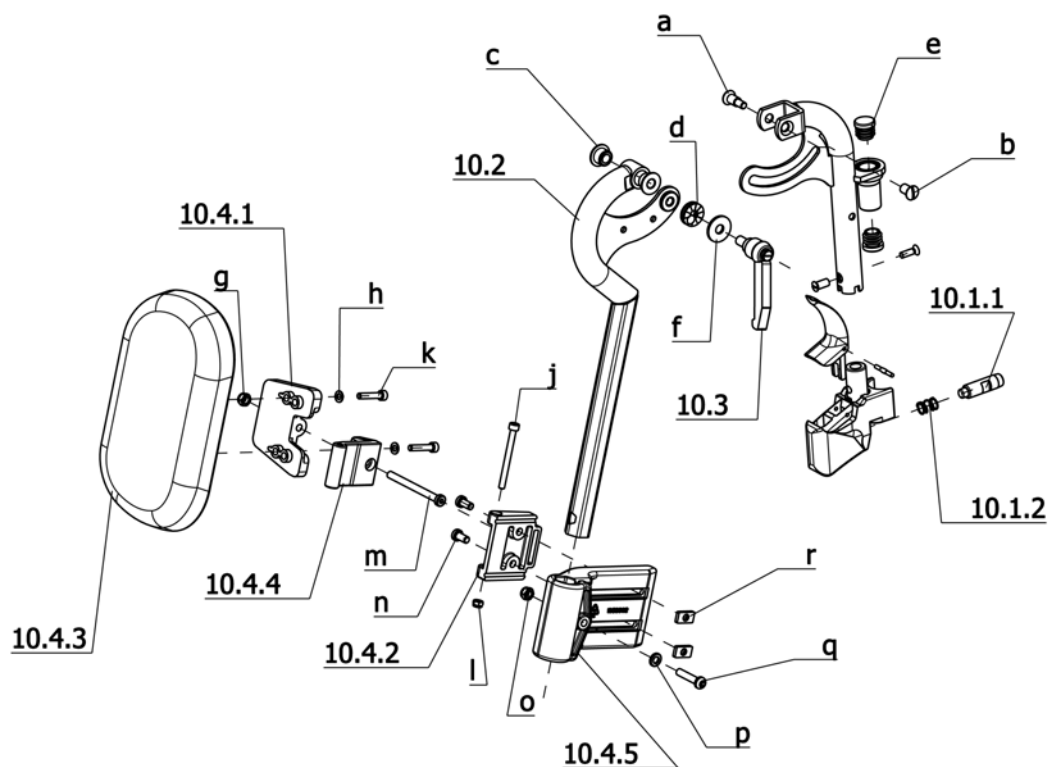
Item	Article-No:	Pc	Description
-	1 044 119	1	Side element
9	1 044 113	1	Side element, left, assembled
9a	1 044 118	1	Side element, right, assembled
9.1	1 044 116	1	Armrest, left, assembled
9.1a	1 044 117	1	Armrest, right, assembled
9.1.1	1 039 106	1	Armrest left code 20
9.1.1a	1 039 107	1	Armrest right code 20
9.2	205 221 906	2	Fork mount, bottom
9.3	205 222 706	1	Side element, left, black plastic part only
9.3a	205 222 806	1	Side element, right, plastic part only, black
9.4	5 005 740	2	Release lever, assembled
9.5	205 221 806	2	Fork bearing for armrest U-frame
a	207 340 600	4	Fillister head screw DIN 7985 M 6x12-4.8
b	207 341 300	2	Fillister head screw DIN7985 M5x25 4.8 A3T
c	207 322 000	2	Locknut, DIN 980/8, M5
-	205 571 600	4	POP blind rivet D: 4x22,5
-	205 515 400	2	POP blind rivet, No. 307472
-	205 528 600	2	POP blind rivet D/4x9,9
-	205 525 700	4	POP blind rivet D/4 No.307 474



**Sub Unit: Code 577; Fold-away arm support with plastic insert, steel**

Item	Article-No:	Pc	Description
9	1 054 280	1	ARM SUPPORTS CODE 577 PAIR
9.1	1 052 958	1	ARM SUPPORT LEFT ASSY CODE 577
9.1a	1 052 959	1	ARM SUPPORT RIGHT ASSY CODE 577
9.1.1	1 039 106	1	Armrest left code 20
9.1.1a	1 039 107	1	Armrest right code 20
9.1.2	1 052 948	2	UPPER FORK BEARING
9.1.3	205 221 906	2	Fork mount, bottom
9.1.4	1 052 945	1	ARM SUPPORT LEFT (ONLY PLASTIC PART)
9.1.4a	1 052 950	1	ARM SUPPORT RIGHT (ONLY PLASTIC PART)
a	207 119 700	4	Oval head countersunk screw, M6x35 DIN966 4.8
b	207 341 300	2	Fillister head screw DIN7985 M5x25 4.8 A3T
c	207 322 000	2	Locknut, DIN 980/8, M5
-	205 571 000	4	POP blind rivet
-	205 570 400	4	POP blind rivet 4x10,3
-	205 571 600	4	POP blind rivet D: 4x22,5

**Budget 2 / a**  
**Component unit: Leg supports**

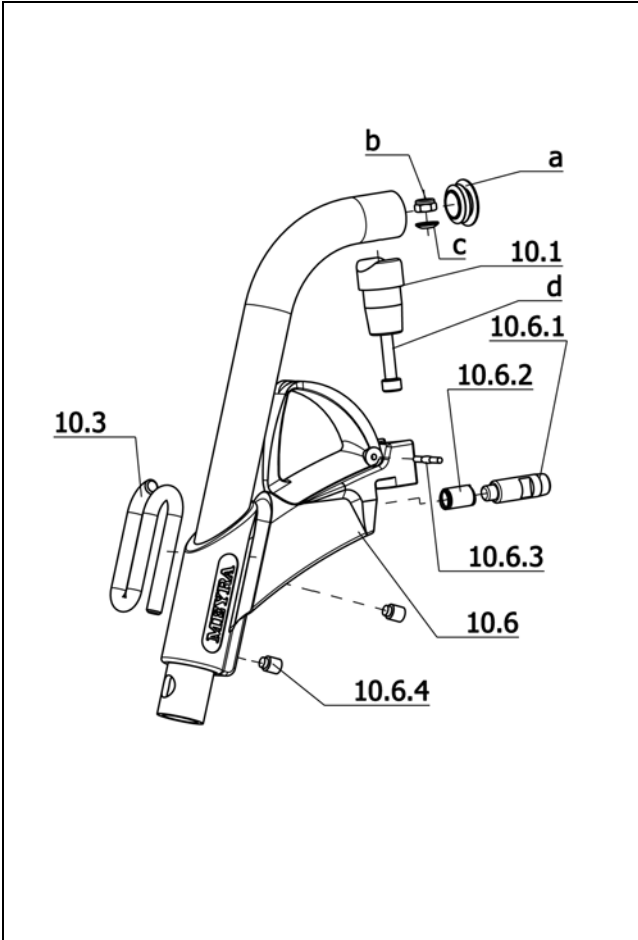


**Sub Unit: Code 92; Removable height adj. leg support, swivell-away**

Item	Article-No:	Pc	Description
-	1 057 532	1	Upper leg supports 1 pair Code 92
10	1 062 212	1	Upper leg support left Code 92
10a	1 062 213	1	Upper leg support right Code 92
10.1	1 053 687	2	Leg support tube cpl.
10.1.1	205 222 206	2	Locking screw
10.1.2	206 323 000	2	Compression spring,D-151 A
10.2	1 058 915	1	Calf plate tube left cpl.
10.2a	1 059 443	1	Calf plate tube right cpl. .
10.3	206 656 600	2	Tilt-clamping lever M 8 x 15
10.4	5 006 345	1	Calf cushion asmb.
10.4.1	1 059 657	2	Swivelling plate
10.4.2	1 061 036	2	Joint bracket long
10.4.3	1 059 656	2	Calf plat slim
10.4.4	1 059 655	2	Joint
10.4.5	1 058 902	2	Support clamp

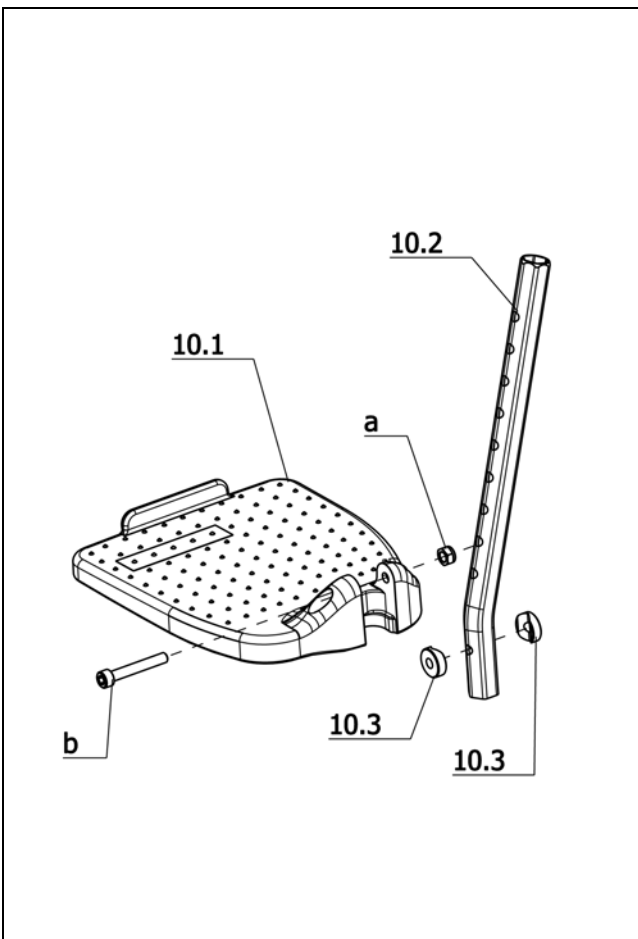
**Sub Unit: Code 92; Removable height adj. leg support, swivell-away**

Item	Article-No:	Pc	Description
a	205 596 200	2	Shoulder screw 9SMNPB 28K
b	205 596 100	2	Sleeve nut M6 black 9S20K ->Attention! Secure screws with no. 243 Loctite 205638800
c	1 047 682	4	Bush sleeve
d	205 595 000	2	Locking washer, black ->Mount the toothed side of the washer facing to the thread bushing
e	205 027 100	2	Plastic slide GL 18 black
f	207 335 000	2	Washer DIN 9021, B 8.4
g	207 320 100	2	Locknut,DIN 980/8,M6, A3T
h	207 330 100	4	Washer DIN 125-B5,3 St A3T
j	207 304 100	2	Cheese head screw DIN 912 M 5x55-8.8
k	207 120 800	4	Cheese head screw DIN 912 M 5x25-8.8
l	207 322 000	2	Locknut,DIN 980/8,M5
m	207 351 000	2	Cheese head screw DIN 7984 M 6x70-8.8
n	207 350 200	4	Cheese head screw,M 6x12-8.8 A3T DIN6912
o	207 417 500	2	Locknut, M6
p	207 330 200	2	Washer,DIN 125-B6,4 St. A3T
q	207 380 200	2	Filister head screw DIN 7380 M 6x30 10,9 A3T
r	1 061 035	4	Square nut M6
-	207 300 600	2	Hexagon screw DIN931/8.8, M6x30
-	207 330 200	2	Washer,DIN 125-B6,4 St. A3T
-	207 417 500	2	Locknut, M6



**Sub Unit: Code 93; Removable leg supports, swivell-away**

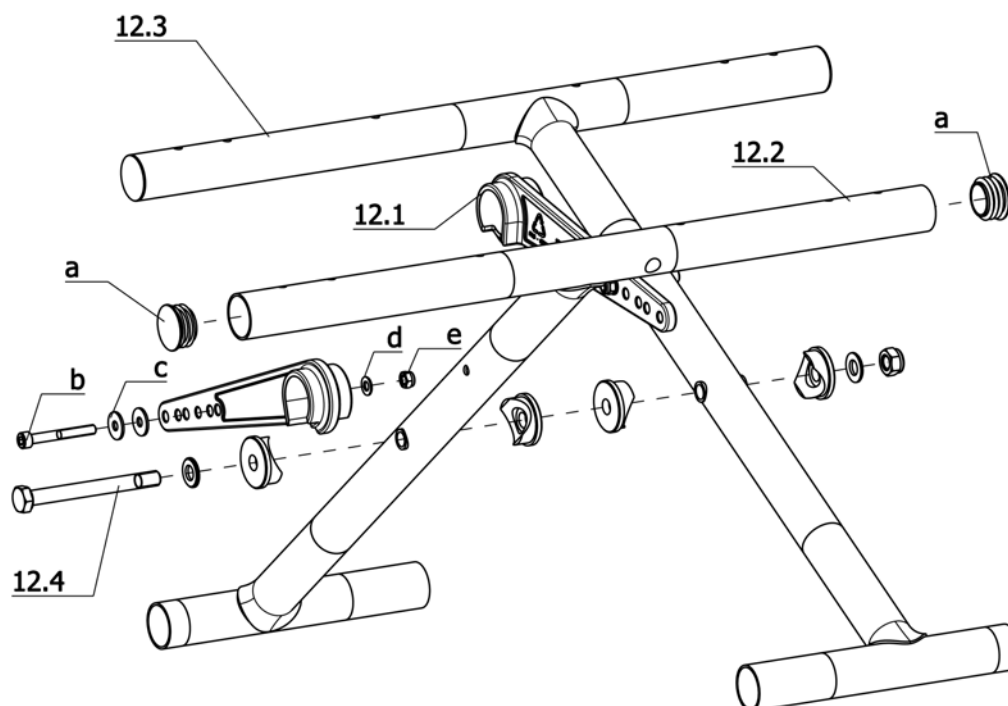
Item	Article-No:	Pc	Description
10	1 044 267	1	Leg support upper part, left assembled
10a	1 044 266	1	Leg support upper part, right assembled
10.1	1 042 609	2	Bearing journal
10.3	1 039 515	2	Calf belt pin
10.6	1 039 505	2	Leg support holder complete
10.6.1	205 214 406	2	Locking screw
10.6.2	206 323 000	2	Compression spring,D-151 A
10.6.3	207 907 500	2	Center grooved dowel pin DIN 1475 3x24
10.6.4	207 252 600	4	Threaded pin,M8x10,DIN915
a	1 051 059	2	Plastic glider
b	207 320 100	2	Locknut,DIN 980/8,M6, A3T
c	207 881 000	2	Spherical disc DIN 6319 C6.4
d	207 302 100	2	Cheese head screw, DIN 912 M 6x35-8.8
-	207 626 600	2	Fillister head screw, DIN 7985
-	207 330 200	2	Washer,DIN 125-B6,4 St. A3T
-	207 320 100	2	Locknut,DIN 980/8,M6, A3T
<b>Seat width 38-40cm</b>			
-	1 054 134	1	LEG SUPPORT CODE 38-93 CPL.
-	1 003 026	1	Leg belt, complete
<b>Seat width 43 – 51cm</b>			
-	1 044 525	1	Leg support upper part, compl. Code 43/48-93
-	1 030 237	1	Leg belt complete



**Sub Unit: Code 805; Foot plates plastic, divided**

Item	Article-No:	Pc	Description
-	1 059 649	1	Insert tube 1 pair Code 805-128
10	1 059 644	1	Footboard left asmb. Code 128-805
10a	1 059 646	1	Footboard right asmb. Code 128-805
10.1	1 059 642	1	Footboard left
10.1a	1 059 645	1	Footboard right
10.2	1 059 643	1	Insert tube (for code 128)
10.3	1 058 905	4	Joint washer
a	207 320 100	2	Locknut,DIN 980/8,M6, A3T
b	207 302 200	2	Cheese head screw DIN 912 M6x40

**Budget 2 / a**  
**Component unit: Cross braces**

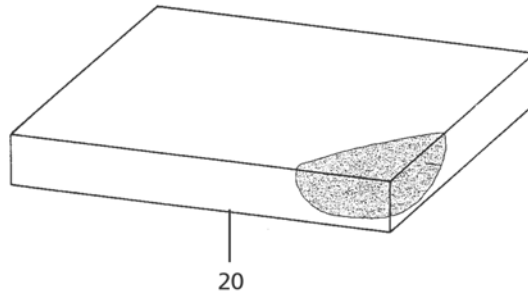


**Sub Unit: Cross braces**

Item	Article-No:	Pc	Description
12.1	1 069 557	2	Cross brace
12.4	5 005 235	1	Crossbrace screw connection, complete
a	8 012 351	4	LAMELLA PLUG, BLACK SFL 25 FOR TUBE 25/20-22
b	207 301 600	2	Cheese head screw DIN 912/8.8 M5x40
c	207 330 000	4	Washer DIN 9021 B 5.3
d	207 330 100	2	Washer DIN 125-B5,3 St A3T
e	207 322 000	2	Locknut, DIN 980/8, M5
<b>Code 38; Seat width 38cm</b>			
12	1 048 993	1	Crossbrace assembled seat width 38 cm
12.2	1 048 991	1	Front crossbrace-half seat width: 38 cm
12.3	1 048 992	1	Rear crossbrace-half seat width: 38 cm
<b>Code 40; Seat width 40cm</b>			
12	1 044 262	1	Crossbrace, assembled seat width 40 cm
12.2	1 044 254	1	Front crossbrace-half seat width 40 cm
12.3	1 044 258	1	Rear crossbrace-half seat width 40 cm

**Sub Unit: Cross braces**

Item	Article-No:	Pc	Description
<b>Code 43; Seat width 43cm</b>			
12	1 044 263	1	Crossbrace, assembled seat width 43 cm
12.2	1 044 255	1	Front crossbrace-half seat width 43 cm
12.3	1 044 259	1	Rear crossbrace-half seat width 43 cm
<b>Code 46; Seat width 46cm</b>			
12	1 069 558	1	Cross brace asmb. SW 46 cm
12.2	1 069 555	1	Front cross brace half SW 46 cm
12.3	1 069 556	1	Rear cross brace half SW 46 cm
<b>Code 48; Seat width 48cm</b>			
12	1 044 265	1	Crossbrace, assembled seat width 48 cm
12.2	1 044 257	1	Front crossbrace-half seat width 48 cm
12.3	1 044 261	1	Rear crossbrace-half seat width 48 cm
<b>Code 345; Seat width 51cm</b>			
12	1 070 561	1	Cross brace asmb. SW 51 cm
12.2	1 070 159	1	Front cross brace half SW 51 cm
12.3	1 070 560	1	Rear cross brace half SW 51 cm



**SD=Seat depth**  
**SW=Seat width**

		SW 38	SW 40	SW 43	SW 46	SW 48	SW 51
SD 43	3 cm	1006685	1006685	1061681	1015928	1046382	1046382



**Budget 2 / a**  
**Component unit: Accessories****Sub Unit: Accessories**

Item	Article-No:	Pc	Description
			<b>Code 691; Support wheels</b>
-	1 045 837	2	Anti-tip castor, assembled
			<b>Code 819; Reflectors</b>
-	1 047 486	1	Passive illumination
			<b>Code 833; Safety belt</b>
-	1 041 414	1	Safety belt, Code 833
			<b>Code 970; Walking stick holder</b>
-	1 063 168	1	Cane holder cpl. -refit kit (clips screw set) 0684



**Budget 2 / a**  
**Notes**



Your specialist dealer

**MEYRA<sup>®</sup>**  
**ORTOPEDIA**  
**We move people.**

MEYRA-ORTOPEDIA  
Vertriebsgesellschaft mbH  
Meyra-Ring 2 • D-32689 Kalletal-Kalldorf

P.O. Box 1703 • D-32591 Vlotho  
Fon +49(0)5733 922-333  
Fax +49(0)5733 922-9333  
info@meyra.de • www.meyra.de  
info@ortopedia.de • www.ortopedia.de

VIS III / Order-No.: 205340201 Status date: 2011-04 Subject to technical modifications