

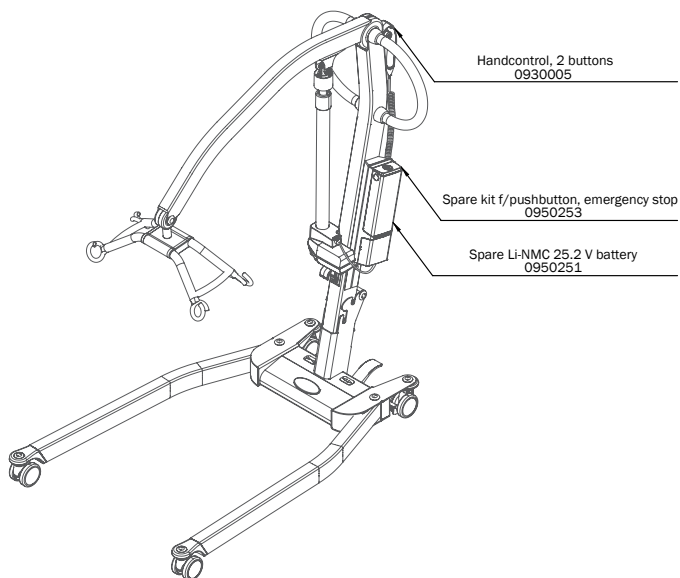


Spare part list – EN

Molift Smart 150

molift[®]
by Etac

SPL09501 - 2026-04-20 - Rev. 7.0



www.etac.com



Fig.1

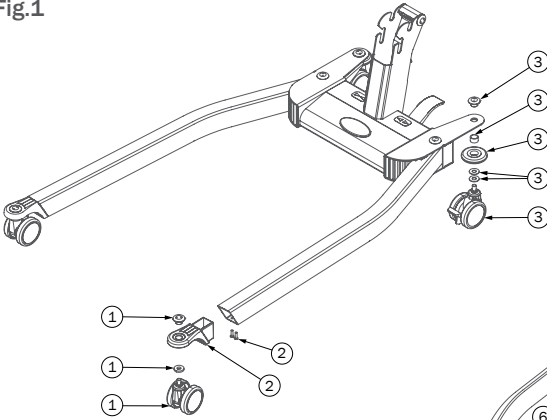


Fig.2

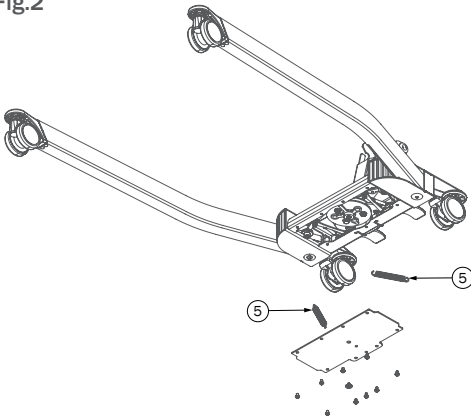


Fig.3

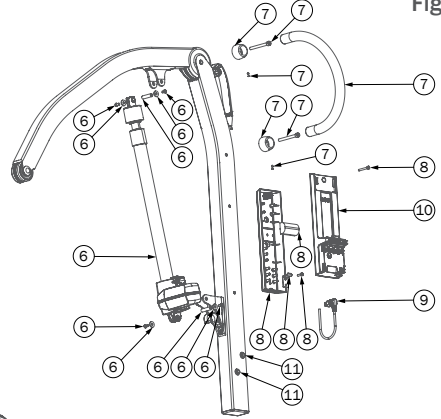


Fig.	Pos.	Title	Item no.
1	1	Front wheel ø75 kit Smart 150/Mover 180	0950201
	2	Front wheel bracket kit Smart 150	0950203
	3	Rear wheel ø75 kit w.brake	0950202
	4	Special tool Molift Smart 150/Mover/Partner 255 (no illustration)	0920501
2	5	Spring kit leg mech. Smart 150	0950250
3	6	Actuator kit Smart 150	0950228
	7	Spare handle kit Smart 150	0950237
	8	Control box mounting kit	0950247
	9	Actuator cable 460 mm	0930116
	10	Spare control box, BLE	0950252
	10	Spare ctrl box w/o chrg. BLE (only available for Japan)	0950252-J
	11	Push nut 1 pcs	0920203
	12	Cable RJ50 f/handctrl. 2&4 btn (no illustration)	0950248
	13	Elastic band ø6x2300mm black (no illustration)	0910174
	14	Clips Smart (no illustration)	0920239

Fig.4

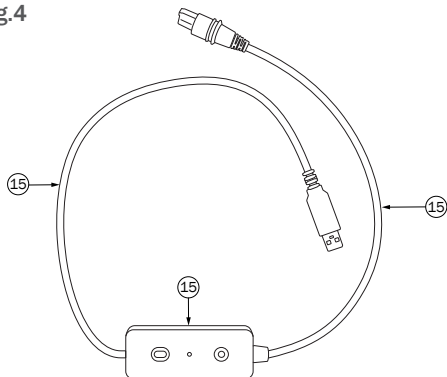


Fig.5

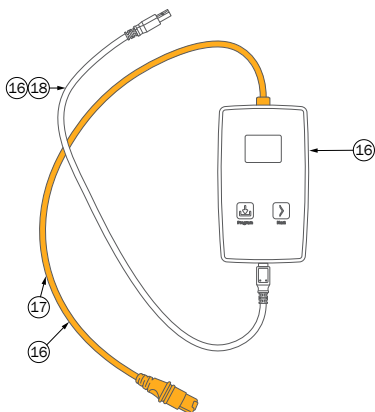


Fig.7

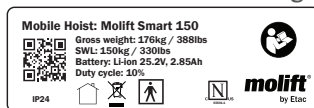


Fig.8

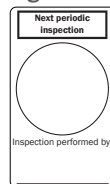


Fig.9



Fig.10



Fig.11



Fig.12

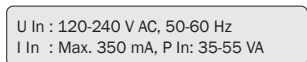


Fig.	Pos.	Title	Item no.
4	15	Cable for Molift Service Tool (USB/RJ50)	2510250
	16	Prog.box kit f/ BLE control box (only for service technician)	0950254
	17	Spare cable f/ prog. box, RJ50 (only for service technician)	0950152
	18	USB A to USB B cable 1M (only for service technician)	0950153
6	19	Spiral cable USA plug (no illustration)	2920092
	20	Spiral cable EU plug (no illustration)	2920093
	21	Spiral cable GB plug (no illustration)	2920094
	22	Spiral cable AU plug (no illustration)	2920095
7	Product label	0930111	
8	Label Safety Check	1100303	
9	Label Safety Check	1110306	
10	Label Molift by Etac	0950128	
11	Label charging instructions (not available for Japan)	0950123	
12	Label elec.data f/ BLE ctrl.box (not available for Japan)	0950124	



Etac Ltd.

Unit 60, Hartlebury Trading Estate,
Hartlebury, Kidderminster,
Worcestershire, DY10 4JB
+44 121 561 2222



Promefa SA

Avenue de Morges 33
1027 Lonay, CH
+41 44 872 97 79



Etac ApS/Media A/S

Parallevej 3

DK-8751 Gedved



+45 796 858 33



patienthandling@etac.com



www.etac.com

molift[®]
by Etac