

**LET'S MAKE
ROOM FOR
DIGNITY**

PRESSALIT®



Inclusive
solutions
for dignified
accessibility

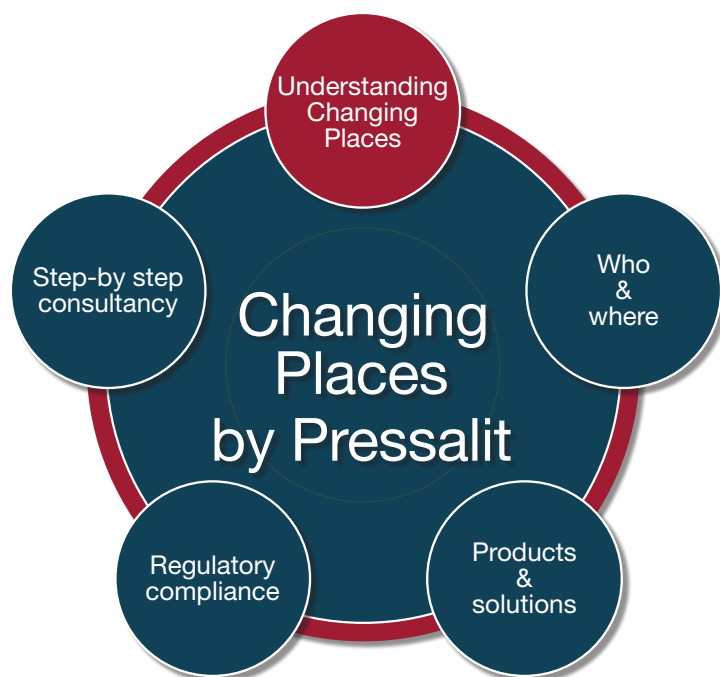
Changing places by Pressalit

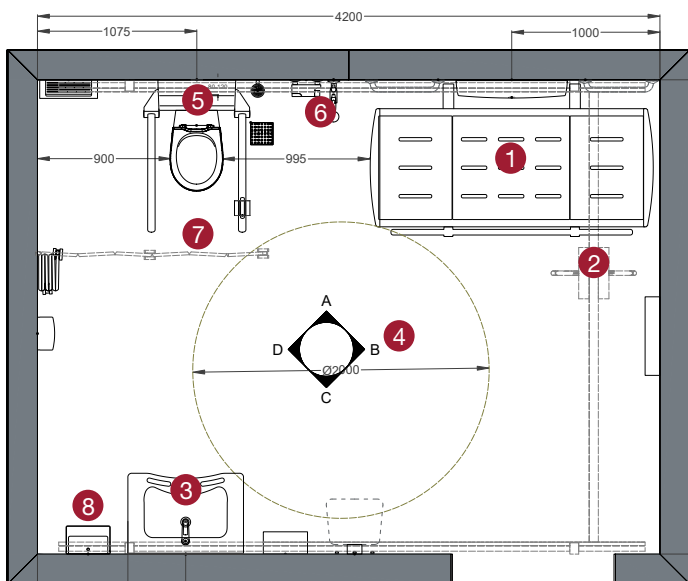
Supporting independence with high-quality, adjustable solutions and top tier consultancy throughout the whole process from idea to design and implementation.

Creating inclusive Changing Places for everyone

Millions of people worldwide require access to Changing Places facilities—spaces designed to provide dignified and hygienic solutions for individuals with complex disabilities. Standard accessible toilets do not accommodate the needs of those requiring additional support, and Changing Places ensure that public environments remain truly inclusive.

For architects, planners, and building owners, incorporating Changing Places is not just about compliance — it is about designing spaces that prioritise accessibility, comfort, and dignity.





Regulatory and ethical considerations

At Pressalit, we are committed to making public spaces inclusive with solutions that meet the highest accessibility standards. Our Changing Places solutions comply with EN 17210:2021, ensuring usability for people with severe disabilities. We provide expert guidance and products, including height-adjustable changing benches, washbasins, ceiling hoists, and height-adjustable toilets with support arms—aligning with CEN/TR 17621:2021 functional guidelines.

Beyond meeting basic building codes, our solutions help create truly accessible environments. Key considerations include adequate space for maneuvering, clear signage, safety features, and privacy measures. For a complete guide to implementing a fully compliant Changing Places facility, contact Pressalit.

The benefits of Changing Places facilities

Creating truly inclusive spaces goes beyond standard accessibility. Changing Places facilities provide essential support for individuals with complex disabilities while offering significant benefits for businesses and communities.

- For individuals:**
 Provides dignity, safety, and independence with features like height-adjustable changing tables and hoist systems, enabling full participation in daily life.
- For businesses:**
 Expands customer reach, enhances brand reputation, and ensures compliance with accessibility regulations. Inclusive facilities attract more visitors and demonstrate social responsibility.
- For communities:**
 Promotes equality and social cohesion by enabling greater participation in work, education, and leisure. Strengthens local economies and supports caregivers.

By investing in Changing Places, you help create environments where everyone, regardless of ability, feels welcome and valued.

Core elements of a Changing Places facility

- 1. Adult-sized height-adjustable changing table**
 Ensures safe and ergonomic care for users
- 2. Ceiling Hoist**
 Facilitates easy transfer for individuals with mobility challenges
- 3. Large height-adjustable washbasin**
 Creates a flexible and functional environment for both standing and seated users
- 4. Spacious layout, min. 10-12 m²**
 Allows room for carers, wheelchairs, and necessary equipment
- 5. Height-adjustable toilet with foldable support arms**
 Provides comfort, support and accessibility
- 6. Access to water / shower**
 Completes the list of necessities for a full experience
- 7. Retractable privacy screen**
 Ensures dignity and respects privacy
- 8. Relevant accessories**
 Grab bars, full-size mirror, clothes hooks, paper dispenser, waste bin etc.

Where are Changing Places needed?

Expanding accessibility across the built environment creates opportunities in all aspects of social life and experiences.

Integrating Changing Places should be a priority in a range of locations, including:



Public buildings

Museums, libraries, and shopping centres that serve diverse visitors.



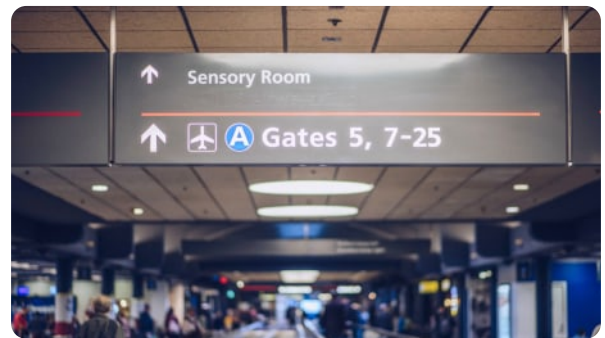
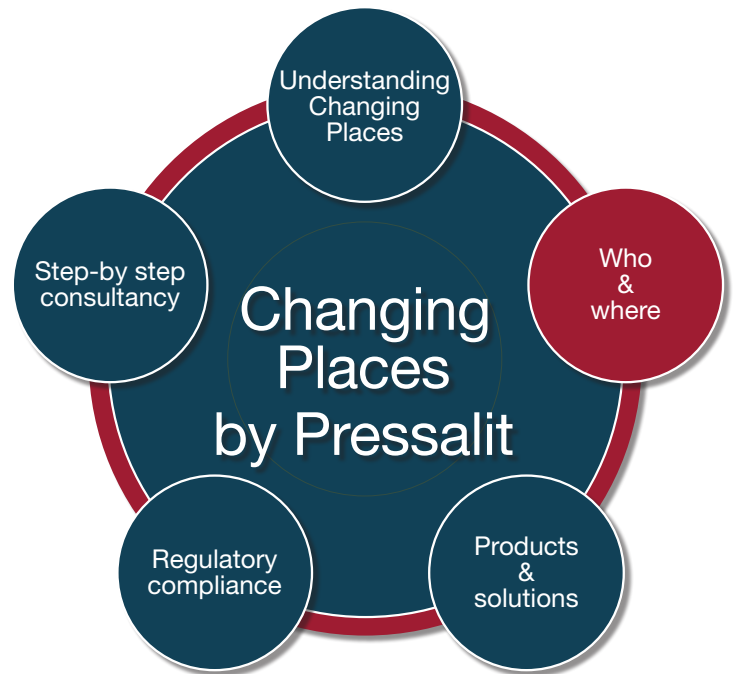
Education institutions

Universities, colleges, and schools providing inclusive facilities for students with disabilities.



Sports and leisure facilities

Stadiums, swimming pools, and fitness centres committed to accessibility for all



Transport hubs

Airports, train stations, and motorway service stations to enable uninterrupted travel.



Healthcare settings

Hospitals and specialist clinics that require adaptable hygiene solutions for patients.

A well-planned **Changing Places** facility ensures that individuals with disabilities can participate fully in public life, strengthening inclusivity and compliance.

Who benefits from Changing Places?

Changing Places facilities serve a broad spectrum of users, including:

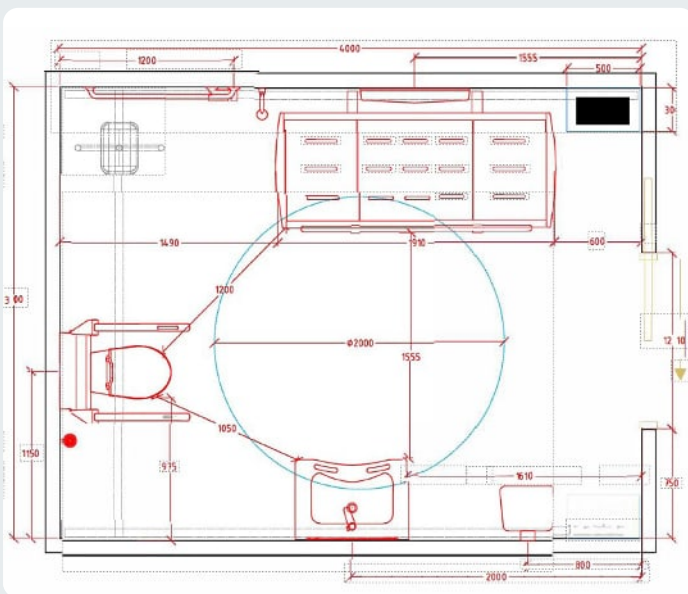
- **Individuals with severe physical disabilities**
Providing essential facilities for those with mobility impairments who require assistance beyond what standard accessible toilets offer.
- **Carers and support workers**
Ensuring safe and hygienic conditions for those assisting individuals with disabilities, reducing strain and injury risk.
- **Families and caregivers**
Offering peace of mind when planning days out by guaranteeing access to suitable restroom facilities.
- **Businesses and public venues**
Expanding accessibility, increasing visitor numbers, and fostering an inclusive reputation.



Creating an inclusive and accessible Changing Places facility

Every Changing Places facility should be carefully planned to suit the needs of the specific project. Factors such as available space, expected users, and operational requirements must be considered when selecting the right products. By tailoring the design, architects and specifiers can ensure maximum usability, long-term functionality, and seamless integration into the built environment.

The right combination of adjustable, high-quality equipment is crucial to creating a facility that is both practical and future-proof. Pressalit's solutions provide flexibility, ensuring that the space meets a wide range of accessibility needs.



It is important to ensure that Changing Places adhere to key design and functionality requirements, including:

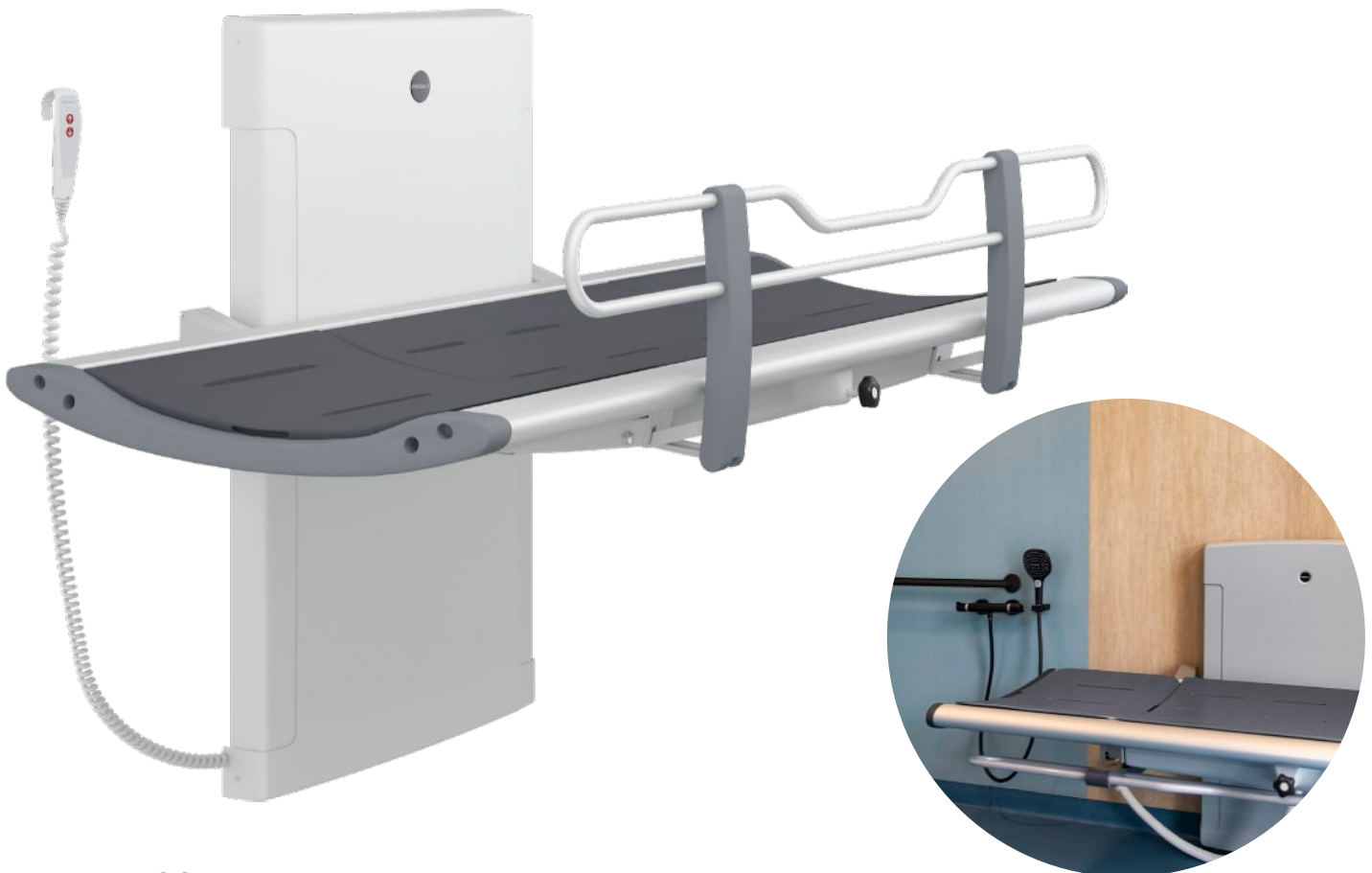
- Minimum room size 3m x 4m (or larger where possible) to allow sufficient space for users and carers.
- Ceiling-mounted hoist system to support safe and efficient transfers, minimising risk for users and assistants.
- Height-adjustable changing table to accommodate varying user needs, ensuring safety and comfort.
- Accessible washbasin with adjustable height functionality, allowing for independent or assisted use.
- Height-adjustable toilet with support arms to facilitate transfers from both sides, accommodating different levels of mobility.
- Adequate turning space (1800mm clear floor space) to allow for wheelchair manoeuvrability.

Choosing the right products to create a complete experience for not only the user but also the carer ensures that the facility remains accessible, safe, and adaptable for years to come.

Let us design your Changing Place

Here you will see a selection of the products and solutions we recommend for a Changing Places facility, and at Pressalit, designing the whole room is part of our professional consultancy. Contact us for a more specific and detailed overview of what is needed or required for your project.

Shower- and changing tables



Pressalit SCT 3000 shower change table

About the product

- Easy to clean, smooth contact surfaces which do not collect dirt and bacteria
- Slightly curved bed shape for comfort and safety
- Built-in water collection tray with integrated water outlet prevents water from splashing

- Ergonomically designed safety rails, which can be folded away
- Maximum user weight 227 kg, tested statically up to 592,5 kg for durability

Alternative products

- SCT1000
- SCT2100
- CT4000
- MCT3

Basin unit



Pressalit MATRIX powered basin unit

About the product

- Available in electrically and manually height adjustable and sideways adjustable versions
- Hygienic cover to conceal the plumbing installations
- Integrated handrails for support and stand/sit aid
- Ergonomic shape for wheelchair access underneath
- Easy to clean

Alternative products

- Select wash basin lifter
- PLUS wash basin bracket
- VALUE wash basin bracket
- Matrix basin unit

Toilet lifter



Pressalit SELECT TL4 toilet lifter

About the product

- Developed with a focus on hygiene and easy cleaning
- Electrically height adjustable 200 mm
- Available with various support arm opportunities
- Suitable for both standard toilet, douche toilet or douche toilet seat
- Maximum user weight 200 kg, tested up to 600 kg for durability

Alternative products

- TL1
- TL2
- TL3

Support arm



reddot design award



Pressalit PLUS support arm

About the product

- Counter-balanced mechanism for smooth and safe operation
- Slip-resistant material that feels warm and secure
- Available in various lengths, shapes, and colours
- Combine with the Pressalit PLUS wall track system for endless customisation
- Maximum load 150 kg, tested up to 700 kg for durability

Alternative products

- Value
- Value II
- TMA 1
- TMA 2

Accessories



Pressalit PLUS handrail

About the product

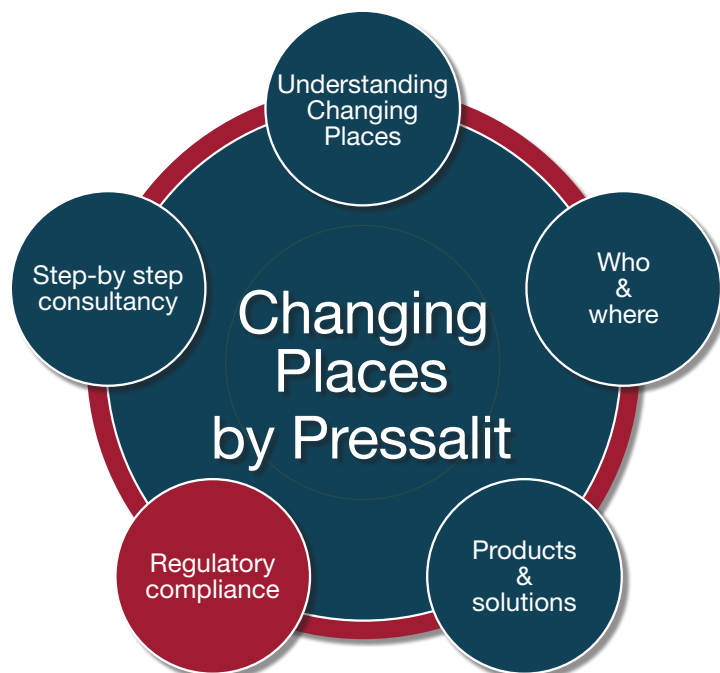
- PLUS handrail solutions supports walking and standing users in the bathroom and assists seated users who need help getting up
- Provides comfortable and firm support
- Countless combination options
- Powder-laquered aluminium
- Maximum load 235 kg

Other products

- PLUS shower seat
- PLUS folding seat
- VALUE IV folding shower seat
- Pressalit Public Universal accessories: soap dispenser, waste bin, disinfection dispenser and paper dispenser

Ensuring regulatory compliance for Changing Places facilities

Creating a truly inclusive environment requires more than just meeting basic accessibility requirements. At Pressalit, we are committed to making buildings accessible and usable for people with disabilities by offering products and services that comply with EN 17210:2021 accessibility standards. This standard is designed to support the implementation of the United Nations Convention on the Rights of Persons with Disabilities in Europe, ensuring that facilities meet the highest accessibility standards.



Key Design Considerations

1. Space and floor plan design

- A Changing Places facility must allow enough room for a wheelchair user and one or two assistants.
- A minimum turning radius of **1500 mm** ensures sufficient space for maneuverability and support staff.
- The layout should prioritise clear floor space, unobstructed access to fixtures, and logical placement of equipment.
- The door width should be at least **1000 mm** for wheelchair access, preferably with an automatic door for convenience.

2. Essential equipment for full accessibility

To comply with EN 17210, a fully equipped Changing Places facility must include:

- **Height-adjustable changing benches** to accommodate users of different needs.
- **Ceiling hoists** for safe and efficient transfers.
- **Height-adjustable washbasins** for ease of use by different individuals.
- **Height-adjustable toilet with support arms** to facilitate transfers from either side.
- **Grab rails and handrails** to enhance stability and user confidence.

3. Location and access

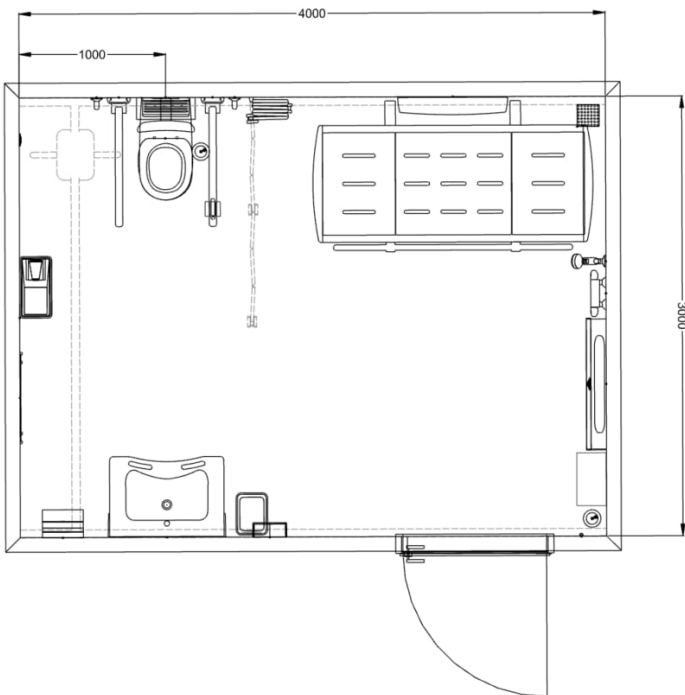
- Changing Places facilities should be situated in highly accessible areas within public buildings, such as shopping centres, transport hubs, and cultural institutions.
- Avoid stairs and barriers—level access and step-free entrances are essential.
- Doors should be easy to open and, where possible, equipped with automatic openers.

4. Signage and user guidance

- Clear and visible signage should guide users to the Changing Places facility from key areas of the building.
- Instructions for equipment use should be displayed inside the facility for caregivers and users.
- Website descriptions and images should provide visitors with detailed information about the facility's accessibility features.

5. Safety and hygiene considerations

- Non-slip flooring to reduce the risk of falls.
- Emergency call systems to ensure immediate assistance when needed.
- Adequate lighting, ventilation, and temperature control to create a comfortable and safe environment.
- Mixing valves with scald protection to prevent burns from hot water.



6. Privacy and dignity

- Lockable doors for security and privacy.
- Privacy screens or curtains enable assisted changing while maintaining dignity.
- Adequate space for caregivers and family members to provide support without compromising the user's comfort.

Consult Pressalit for expert guidance

Planning a Changing Places facility requires careful consideration of layout, equipment, and compliance with international accessibility standards. At Pressalit, we provide expert consultancy services to help architects and facility managers design spaces that are fully accessible, compliant, and user-friendly.

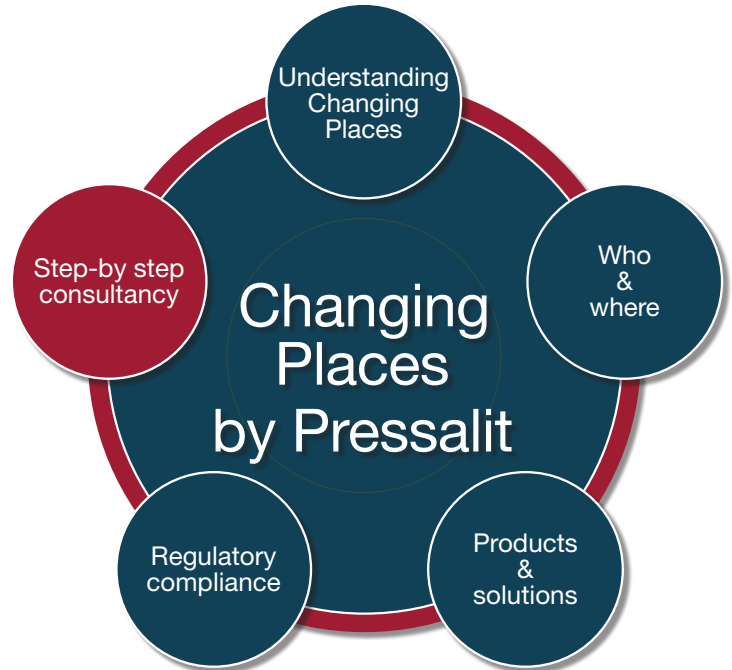
Contact Pressalit today to receive our complete Changing Places Guide in compliance with EN 17210:2021 and ensure your facility meets the highest standards of accessibility and usability.

What to consider when complying with regulations

Meeting the requirements of EN 17210:2021 often goes beyond the minimum legal obligations set by local building codes. It is crucial to verify and comply with national and regional regulations to ensure full accessibility. Additionally, following the CEN/TR 17621:2021 functional guidelines provides essential criteria for designing accessible and usable Changing Places facilities that accommodate individuals with severe disabilities and their caregivers.

From concept to completion

Creating a Changing Places facility requires careful planning, expert guidance, and high-quality products that meet accessibility standards. At Pressalit, we offer a structured step-by-step consultancy approach, ensuring that every Changing Places installation is tailored to the specific needs of the building, users, and operators. Our expertise ensures seamless integration of Changing Places within new builds and retrofit projects, helping architects, planners, and decision-makers create truly inclusive environments.



Step-by-Step consultancy

Initial consultation

Every project starts with a detailed consultation where we assess site requirements, regulatory compliance, and spatial constraints. During this phase, we collaborate with architects and facility managers to determine the optimal location, size, and layout of the facility. Understanding the intended users and frequency of use is essential for making informed design decisions that maximise accessibility and usability.

Design and planning

Our team provides expert guidance in designing a fully compliant Changing Places facility. We offer tailored architectural drawings, layout recommendations, and detailed guidance to ensure adherence to building regulations and accessibility standards. By working closely with stakeholders, we create layouts that accommodate essential elements such as adequate turning space, properly positioned hoists, and user-friendly sanitaryware. We also provide 3D visualisations and technical drawings to aid in the approval process.

Compliance and risk assessment

Ensuring that a Changing Places facility meets national and international accessibility standards is essential for legal compliance and user safety. Our team conducts thorough risk assessments to identify potential hazards, verify proper installation, and confirm adherence to guidelines. This process includes checking the load-bearing capacity of walls for mounting equipment, ensuring proper hoist coverage, and validating that hygiene and safety standards are met.

Product selection

Choosing the right products is crucial to the long-term functionality and comfort of the Changing Places facility. Pressalit offers a wide range of height-adjustable solutions, including changing tables, washbasins, and support rails. We assist in selecting the most suitable products based on the facility's needs, taking into account adjustability, durability, and user safety. Our solutions are designed to be flexible, ensuring they meet the needs of a diverse range of users, from children to adults requiring assistance.

Installation and support

A successful installation is key to the facility's long-term functionality. Pressalit provides installation support for qualified contractors to ensure that every product is correctly installed and fully operational. The installation process includes.

Maintenance and aftercare

The usability and longevity of a Changing Places facility depend on regular maintenance and aftercare. Pressalit provides ongoing support, to ensure that all equipment continues to function at its best. We offer guidance on proper cleaning, regular safety inspections, and adjustments that may be needed over time.

By following this structured consultancy approach, Pressalit guarantees that every Changing Places facility is optimised for accessibility, safety, and ease of use. From the initial consultation to long-term support, we are committed to delivering high-quality solutions that create truly inclusive environments.

LET'S MAKE
ROOM FOR
DIGNITY





LET'S MAKE
ROOM FOR
DIGNITY

PRESSALIT®



PREMIUM BATHROOM SOLUTIONS SINCE 1954

Pressalit A/S is a Danish privately owned company with production facilities in Ry, Denmark. Since 1954, we have been designing and producing toilet seats of the highest quality. And since 1975, Pressalit has also been developing accessible bathrooms and height adjustable kitchens for people with reduced mobility. This has made us one of the world's leading manufacturers of premium bathroom solutions. High quality, flawless design and reliable functionality are the core features of our wide range of products.

PRESSALIT SUPPORTS UNITED NATIONS GLOBAL GOALS



Pressalit A/S, Pressalitvej 1, 8680 Ry, Denmark,
T: +45 8788 8788, F: +45 8788 8789
pressalit@pressalit.com, pressalit.com

Subject to changes in the product range, technical changes and printing errors.